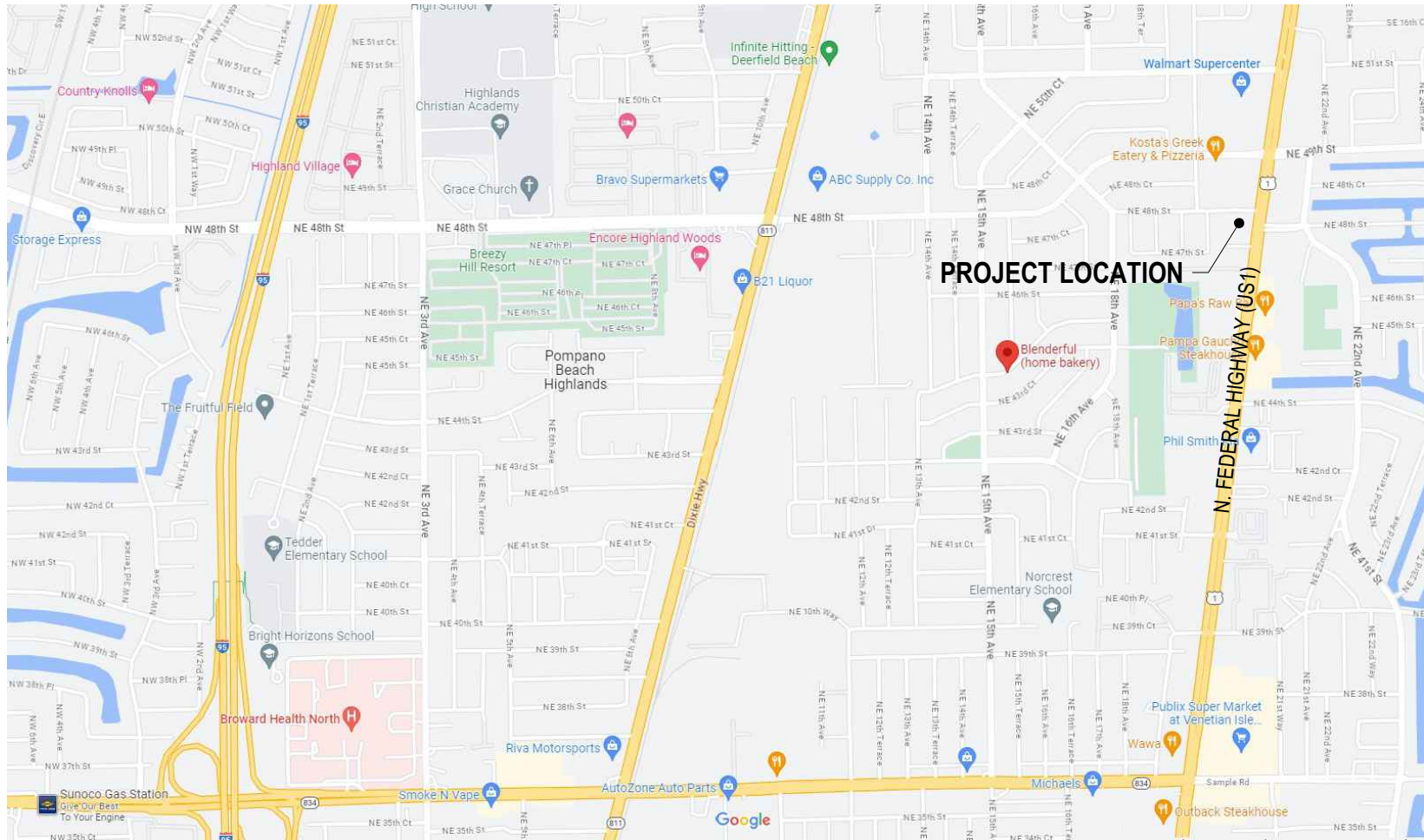


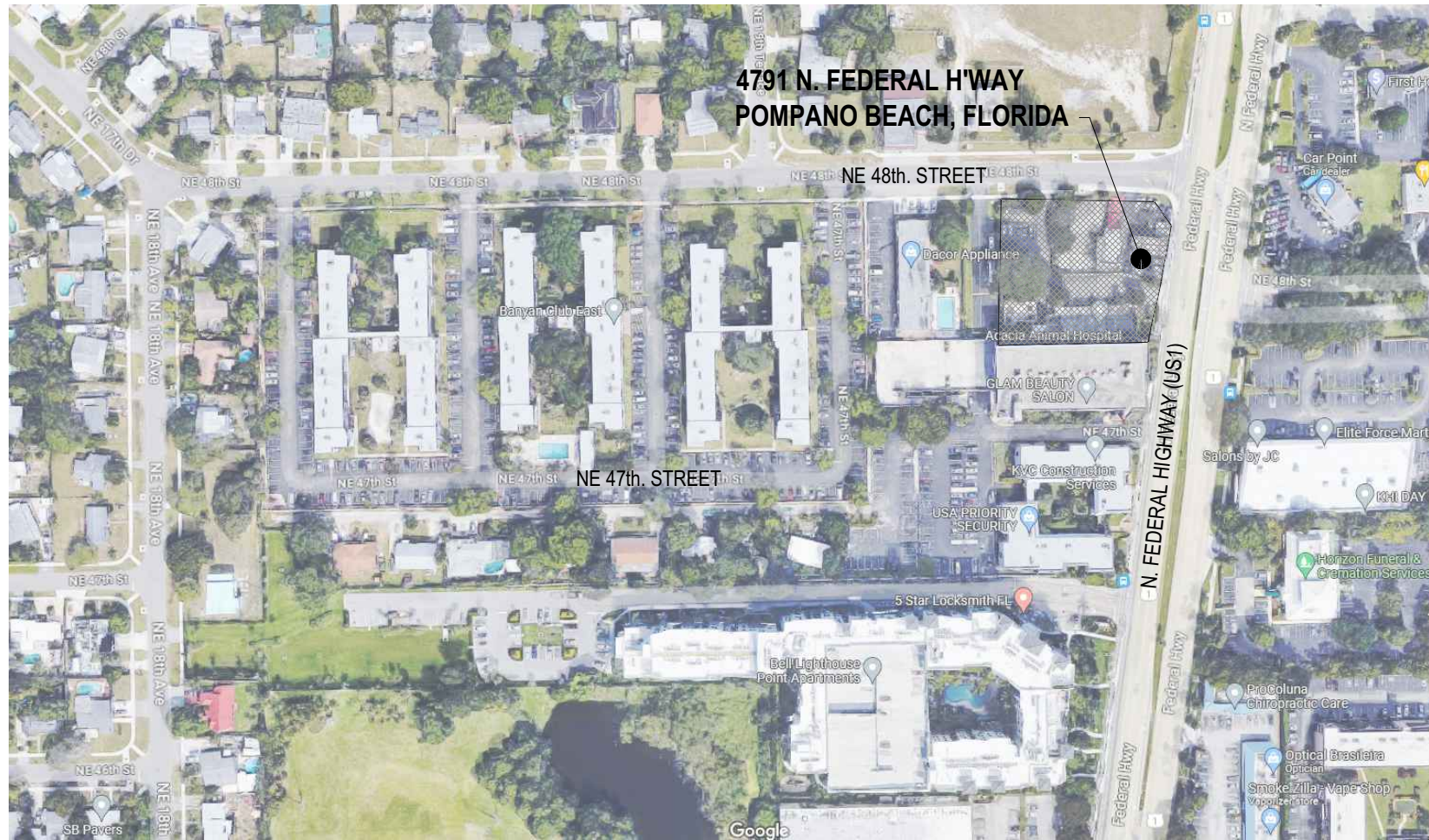
Drawing name: P:\2023 Projects\2304 - 4791 N Fed Hwy Pompano\ARCH\001 - 2304\_GN-001 - COVER SHEET.dwg layout1 Jan 03, 2024 1:11pm by: bhayles

# SITE PLAN REVIEW SUBMITTAL RETAIL DEVELOPMENT

4791 N. FEDERAL HIGHWAY  
POMPAÑO BEACH, FLORIDA



**VICINITY MAP**  
NOT TO SCALE



**LOCATION MAP**  
NOT TO SCALE

## GENERAL

001 GN-001 COVER  
002 SURVEY

## CIVIL

003 C-1 PRELIMINARY PGD PLAN  
004 C-2 PRELIMINARY WATER AND SEWER PLAN

## LANDSCAPE

005 L 1.01 TREE DISPOSITION  
006 L 2.01 LANDSCAPE PLAN  
007 L 2.02 LANDSCAPE CPTD DIAGRAM  
008 L 2.03 PLANT LIST AND LANDSCAPE TABULATIONS  
009 L 2.04 LANDSCAPE DETAILS AND SPECIFICATIONS

## ARCHITECTURE

010 AS-101 SITE PLAN  
011 AS-102 CPTD SITE PLAN  
012 A-101 FLOOR PLAN  
013 A-102 ROOF PLAN  
014 A-103 BUILDING ELEVATIONS  
015 PH-101 PHOTOMETRIC PLAN

## JUSTIN ARCHITECTS

2400 E. COMMERCIAL BLVD., SUITE 201 FT. LAUDERDALE, FL. 33308 954-771-2724

(ARCHITECTURE)

## BOTEK THURLOW ENGINEERING, INC.

3409 NW 9th. AVENUE, SUITE 1102 FT. LAUDERDALE, FL. 33309 954-568-0888

(CIVIL ENGINEERING)

## DULAND DESIGN

901 S. FEDERAL HIGHWAY, SUITE 200 FT. LAUDERDALE, FL. 33316 954-866-0066

(LANDSCAPE ARCHITECTURE)



PROJECT: RETAIL DEVELOPMENT  
4791 N. FEDERAL HIGHWAY  
POMPAÑO BEACH, FLORIDA

DATE	01/03/2024	REVISIONS:			
DRAWN BY:	BH				
CHECKED BY:	CJ				
JOB No:	2304				

COVER SHEET  
SITE PLAN REVIEW SUBMITTAL

**DRC**  
PZ23-12000049  
02/21/2024